

# LED PROFILE PHIL53 C10 4050 RAW ALU.








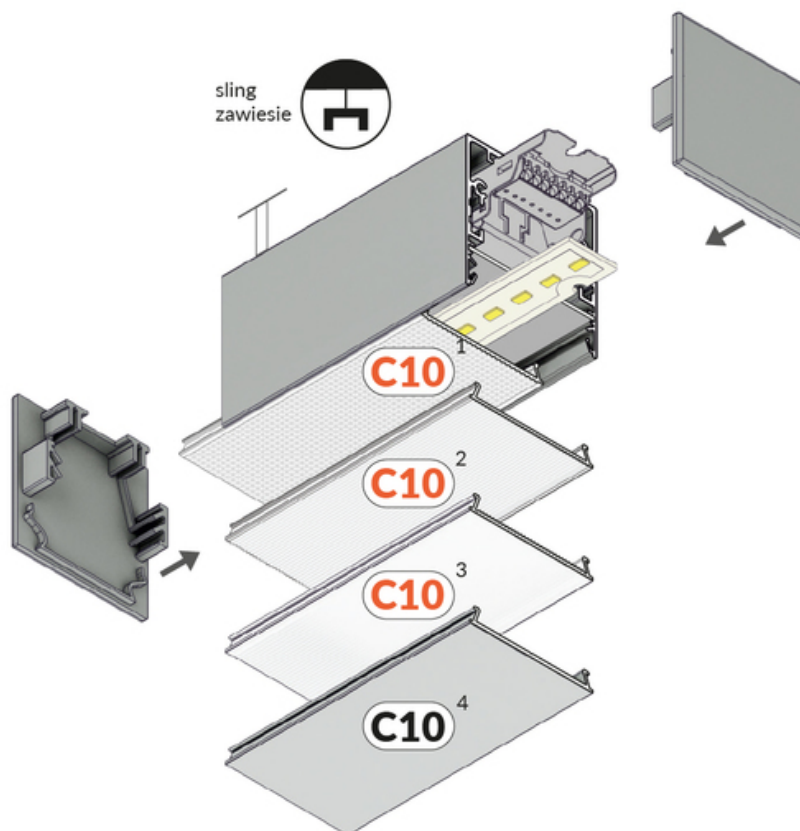
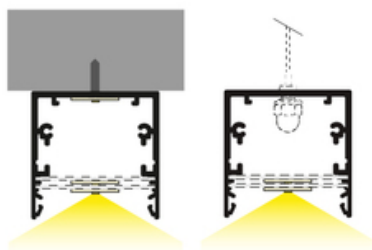
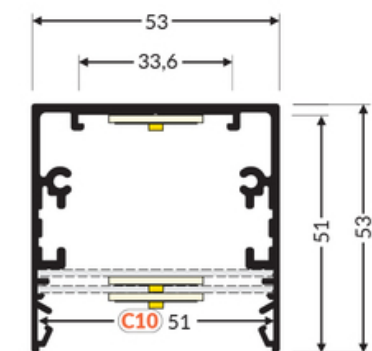
Surface



Lighting



	<ul style="list-style-type: none"> <li>• profile for creating LED luminaires</li> <li>• perfect as main lighting</li> <li>• various installation options</li> <li>• larger sizes</li> <li>• 3 types of covers available with different light distributions</li> <li>• enables hiding the power supply inside the profile</li> </ul>	<ul style="list-style-type: none"> <li> EU industrial designs</li> <li> CE</li> <li> Made in Poland</li> </ul>	 <p>Buy product</p>
---	---	---	--



**TOPMET LIGHT KŁOSOWICZ WIŚNIEWSKI sp. z o.o.**

Ostrowska 354 | 61-312 Poznań | POLAND

tel.: +48 61 872 75 00

info@topmet.pl

pdf card generation date: 16.06.2026





## Basic Informations

<p>EAN: 5901597254355 Index: 63730000 Material: aluminium Color: raw aluminium Length [mm]: 4050 Weight [kg]: 3.848 Net weight [kg]: 0.029 Country of origin: PL</p>	<p>Measurement unit: qty Product packaging dimensions [mm]: 4050 x 53 x 53 Bulk packing [qty]: 10 Master packaging type: Bulk Product with gross packaging weight [kg]: 38.48</p>
--	---

## AVAILABLE COLORS

 <p>LED profile PHIL53 C10 4050 black painted RAL9005 /plastic bag 63730002</p>	 <p>LED profile PHIL53 C10 4050 white painted RAL9003 /plastic bag 63730001</p>	 <p>LED profile PHIL53 C10 4050 anod. /plastic bag 63730020</p>
--	--	--

## AVAILABLE VARIANTS

1000 mm, 2000 mm, 3000 mm, 4050 mm

## Matching elements

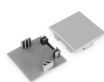
## DIFFUSERS

 <p><b>diffuser C10 click 4100 wide</b> index: 63780000</p>	 <p><b>diffuser C10 click 4100 narrow</b> index: 63800000</p>	 <p><b>diffuser C10 click 4100 opal</b> index: 63700038</p>
 <p><b>diffuser C10 click 4100 pro</b> index: P2001216</p>	 <p><b>diffuser C10 click 4100 basic</b> index: P2001638</p>	

## END CAPS



**end cap PHIL53 grey**  
/plastic bag [2pcs]  
index: 63640022



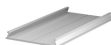
**end cap PHIL53 silver**  
/plastic bag [2pcs]  
index: 63640040

## OTHER



**LED mounting 50 4050**  
index: 25180000

## COMPLEMENTARY PROFILE



**cover C10 4050 anod.**  
index: 63750020



**cover C10 4050 white  
painted RAL9003 /plastic  
bag**  
index: 63750001



**cover C10 4050 black  
painted RAL9005 /plastic  
bag**  
index: 63750002



**cover C10 4050 raw alu.**  
index: 63750000