

# LED PROFILE PHIL53 C10 3000 RAW ALU.








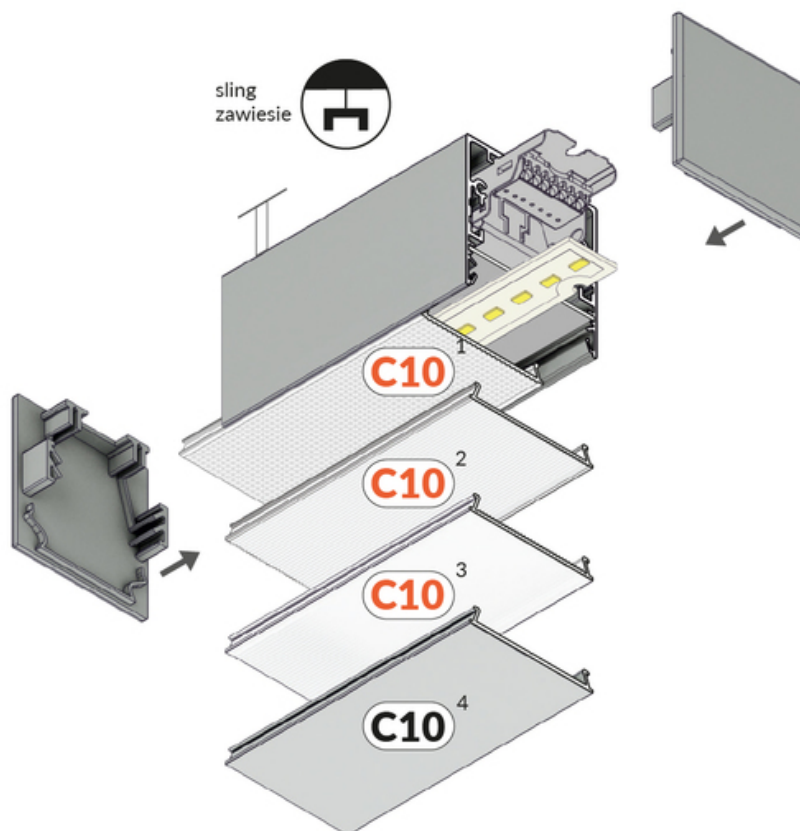
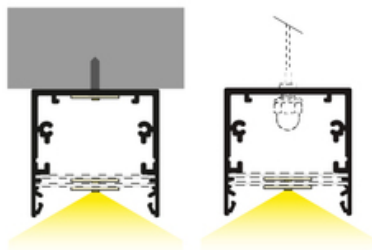
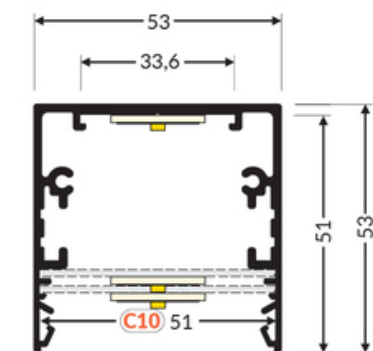
Surface



Lighting



|   |  |   |  |
|---|--|---|--|
|  | <ul style="list-style-type: none"><li>• profile for creating LED luminaires</li><li>• perfect as main lighting</li><li>• various installation options</li><li>• larger sizes</li><li>• 3 types of covers available with different light distributions</li><li>• enables hiding the power supply inside the profile</li></ul> |  EU industrial designs<br> CE<br> Made in Poland | <br>Buy product |
|---|--|---|--|



TOPMET LIGHT KŁOSOWICZ WIŚNIEWSKI sp. z o.o.

Ostrowska 354 | 61-312 Poznań | POLAND

tel.: +48 61 872 75 00

info@topmet.pl

pdf card generation date: 30.06.2026



## Basic Informations

|   |  |
|---|--|
| <p>EAN: 5901597254294<br/>Index: 63720000<br/>Material: aluminium<br/>Color: raw aluminium<br/>Length [mm]: 3000<br/>Weight [kg]: 2.85<br/>Net weight [kg]: 0.012<br/>Country of origin: PL</p> | <p>Measurement unit: qty<br/>Product packaging dimensions [mm]: 3000 x 53 x 53<br/>Bulk packing [qty]: 10<br/>Master packaging type: Bulk<br/>Product with gross packaging weight [kg]: 28.5</p> |
|---|--|

## AVAILABLE COLORS

|  |  |  |
|--|--|--|
|  <p>LED profile PHIL53 C10<br/>3000 anod. /plastic bag<br/>63720020</p> |  <p>LED profile PHIL53 C10<br/>3000 white painted<br/>RAL9003 /plastic bag<br/>63720001</p> |  <p>LED profile PHIL53 C10<br/>3000 black painted<br/>RAL9005 /plastic bag<br/>63720002</p> |
|--|--|--|

## AVAILABLE VARIANTS

1000 mm, 2000 mm, 3000 mm, 4050 mm

## Matching elements

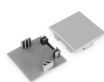
## DIFFUSERS

|  |  |  |
|--|--|--|
|  <p><b>diffuser C10 click 3000 wide</b><br/>index: 63770000</p> |  <p><b>diffuser C10 click 3000 narrow</b><br/>index: 63790000</p> |  <p><b>diffuser C10 click 3000 opal</b><br/>index: 63760038</p> |
|  <p><b>diffuser C10 click 3000 pro</b><br/>index: P2001116</p>  |  <p><b>diffuser C10 click 3000 basic</b><br/>index: P2001538</p>  |  |

## END CAPS



**end cap PHIL53 grey**  
/plastic bag [2pcs]  
index: 63640022



**end cap PHIL53 silver**  
/plastic bag [2pcs]  
index: 63640040

---

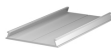
## OTHER



**LED mounting 50 3000**  
index: 25170000

---

## COMPLEMENTARY PROFILE



**cover C10 3000 anod.**  
index: 63740020



**cover C10 3000 white  
painted RAL9003 /plastic  
bag**  
index: 63740001



**cover C10 3000 black  
painted RAL9005 /plastic  
bag**  
index: 63740002



**cover C10 3000 raw alu.**  
index: 63740000